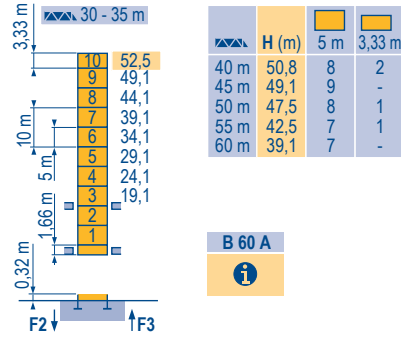
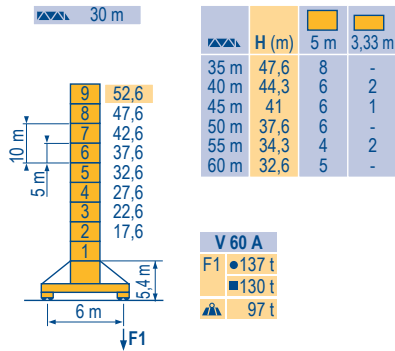
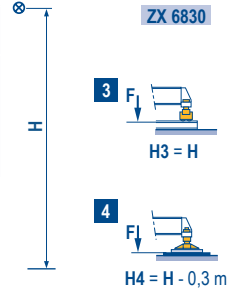
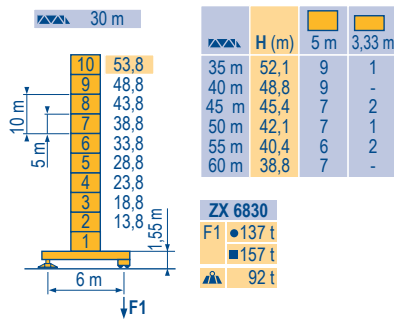
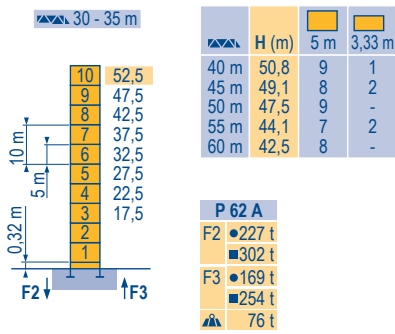


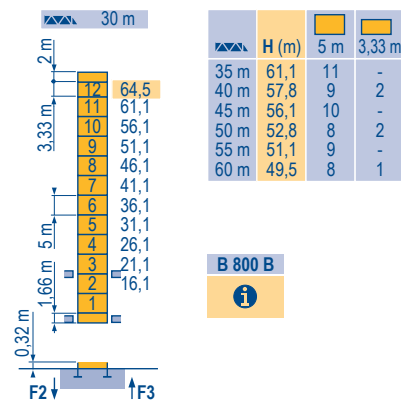
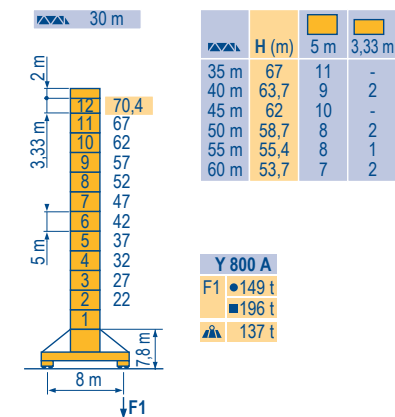
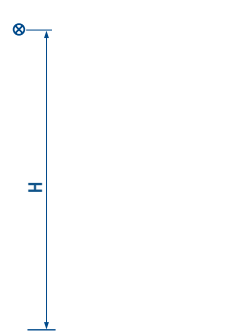
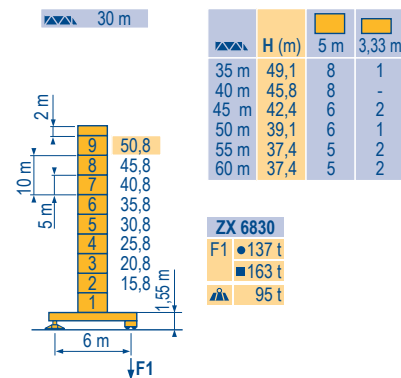
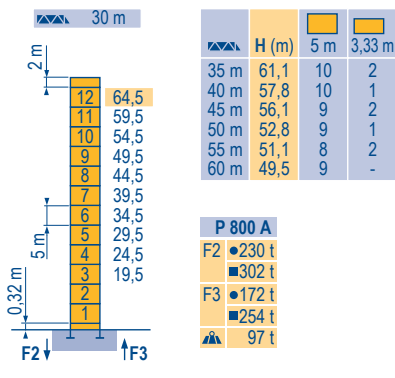
Mat / Réactions \square 2 m

Maste /
Eckdrücke
Masts /
Reactions
Mástil /
Reacciones
Torre / Reazioni
Tramo /
Reacções

MDA 4



\square 2,45 m



MR 295 H20

POTAIN

F	D	GB	E	I	P
● Réactions en service	Reaktionskräfte in Betrieb	Reactions in service	Reacciones en servicio	Reazioni in servizio	Reacções em serviço
■ Réactions hors service	Reaktionskräfte außer Betrieb	Reactions out of service	Reacciones fuera de servicio	Reazioni fuori servizio	Reacções fora de serviço
▲ A vide sans lest (ni train de transport) avec flèche et hauteur maximum.	Ohne Last, Ballast (und Transportachse), mit Maximalausleger und Maximalhöhe.	Without load, ballast (or transport axes), with maximum jib and maximum height.	Sin carga, sin lastre, (ni tren de transporte), flecha y altura máxima.	A vuoto, senza zavorra (ne assali di trasporto) con braccio massimo e altezza massima.	Sem carga (nem trem de transporte)- sem lastro com lança e altura máximas.

MR 295 H20 50 Hz													ch - PS hp	kW				
▲ ▼	100 LVF 50 Optima	m/min t	0 → 36 → 54 → 86 → 94	0 → 18 → 27 → 43 → 47	10	6	3	1,9	20	12	6	3,8	100	75	1018 m	CEI 38/IEC 38 400 V (+6% -10%) 50 Hz		
	150 LVF 50 GH Optima	m/min t	0 → 54 → 92 → 180 → 244	0 → 27 → 46 → 90 → 122	10	5	1,5	0,55	20	10	3	1,1	150	110	1200 m			
	150 LCC 50	m/min t	0 → 58 → 68 → 86 → 114 → 138	0 → 29 → 34 → 43 → 57 → 69	10	7,5	5	2,5	1,25	20	15	10	5	2,5	150		110	786 m
	100 VVF 40	m/min	1 min 40 s											100	75			
	RVF 182 Optima +	tr/min U/min - rpm	0 → 0,8											2 x 12	2 x 9	kVA 100 LVF : 220 kVA 150 LVF : 270 kVA 150 LCC : 270 kVA		
	ZX 6830 RT 664 A2B 2V	m/min	16 - 32											6 x 7	6 x 5,2			
	V 60 A RT 544 A1 2V R ≥ 13 m	m/min	13,5 - 27											4 x 7	4 x 5,2			
	Y 800 A RT 584 A1 2V	m/min	13,5 - 27											8 x 7	8 x 5,2			

MR 295 H20 60 Hz													ch - PS hp	kW				
▲ ▼	100 LVF 50 Optima	m/min t	0 → 36 → 54 → 86 → 94	0 → 18 → 27 → 43 → 47	10	6	3	1,9	20	12	6	3,8	100	75	1018 m	CEI 38/IEC 38 480 V (+6% -10%) 60 Hz		
	180 LVF 50 GH Optima	m/min t	0 → 64 → 110 → 216 → 244	0 → 32 → 55 → 108 → 122	10	5	1,5	0,55	20	10	3	1,1	180	132	1200 m			
	150 LCC 50	m/min t	0 → 58 → 68 → 86 → 114 → 138	0 → 29 → 34 → 43 → 57 → 69	10	7,5	5	2,5	1,25	20	15	10	5	2,5	150		110	786 m
	100 VVF 40	m/min	1 min 40 s												100		75	
	RVF 182 Optima +	tr/min U/min - rpm	0 → 0,8											2 x 12	2 x 9	kVA 100 LVF : 220 kVA 180 LVF : 300 kVA 150 LCC : 300 kVA		
	ZX 6830 RT 664 A2B 2V	m/min	19 - 38											6 x 8,4	6 x 6,2			
	V 60 A RT 544 A1 2V R ≥ 13 m	m/min	16 - 32											4 x 8,4	4 x 6,2			
	Y 800 A RT 584 A1 2V	m/min	16 - 32											8 x 8,4	8 x 6,2			

F

Levage
Relevage
Orientation
Translation
Nous consulter

D

Heben
Ausleger-Einziehen
Schwenken
Kranfahren
Auf Anfrage

GB

Hoisting
Luffing
Slewing
Travelling
Consult us

E

Elevación
Elevación de flecha
Orientación
Traslación
Consultarnos

I

Sollevarmento
Brandeggio
Rotazione
Traslazione
Consultateci

P

Elevação
Inclinação da lança
Rotação
Translação
Consultar-nos



Document commercial non contractuel. Pour toute information technique se référer à la notice correspondante.

Unverbindliches Vertriebsdokument. Für technische Informationen, siehe die entsprechenden Anweisungen.

This commercial document is not legally binding. For any technical information, please refer to the corresponding instructions.

Documento comercial no contractuel. Para cualquier información técnica, ver la noticia correspondiente.

Documento commerciale non vincolante, per tutte le informazioni tecniche fare riferimento al catalogo istruzioni.

Documento comercial não contratual. Para qualquer informação técnica complementar consultar as respectivas instruções.



Americas

Tel : +1 888 479 7278
Tel : +1 717 593 2000

Europe - Middle East - Africa

Tel : +33 (0) 4 72 81 50 00
Tel : +44 (0) 191 522 2000

Asia - Pacific

Tel : +65 6264 1188
Fax : +65 6862 4040

www.manitowoccrane.com

18, rue de Charbonnières - B.R.173
69132 ECULLY Cedex - France

Tél. : +33 (0) 4 72 18 20 20
Fax. : +33 (0) 4 72 18 20 00
www.manitowoccrane.com

MR 295 H20

Code R-89985-35_Réf. 2005 20 MDA 8

Copyright.Reproduction interdite © POTAIN 2005