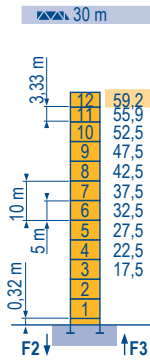




**Mat / Réactions**    Telescopable 2 m  
**Maste /**  
**Eckdrücke**        Teleskopierbar 2 m  
**Masts /**  
**Reactions**           Telescopico 2 m  
**Mástil /**  
**Reacciones**        Telescopico 2 m  
**Torre / Reazioni**    Telescopagem 2 m  
**Tramo /**  
**Reacções**

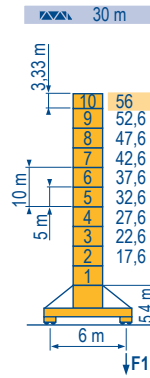
MDP 1



▲▲	H (m)	5 m	3,33 m
35	55,9	10	1
40	52,5	10	-
45	50,9	9	1
50	47,5	9	0
55	45,9	8	1

**P 61 A**

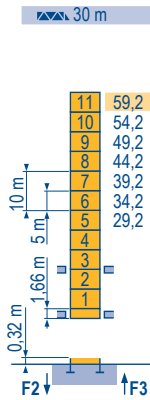
F2	● 163 t
	■ 253 t
F3	● 123 t
	■ 214 t
▲	62 t



▲▲	H (m)	5 m	3,33 m
35 m	52,6	9	-
40 m	49,3	7	2
45 m	46	7	1
50 m	42,6	7	-
55 m	39,3	5	2

**V 60 A**

F1	● 104 t
	■ 133 t
▲	72 t



▲▲	H (m)	5 m	3,33 m
35 m	55,9	9	2
40 m	52,5	9	1
45 m	50,9	8	2
50 m	47,5	8	1
55 m	44,2	8	-

**B 60 A**

F2	● 163 t
	■ 253 t
F3	● 123 t
	■ 214 t
▲	62 t



**MR 225 A**



**F**

● Réactions en service  
 ■ Réactions hors service  
 ▲ A vide sans lest (ni train de transport) avec flèche et hauteur maximum.

**D**

● Reaktionskräfte in Betrieb  
 ■ Reaktionskräfte außer Betrieb  
 ▲ Ohne Last, Ballast (und Transportachse), mit Maximalausleger und Maximalhöhe.

**GB**

● Reactions in service  
 ■ Reactions out of service  
 ▲ Without load, ballast (or transport axles), with maximum jib and maximum height.

**E**

● Reacciones en servicio  
 ■ Reacciones fuera de servicio  
 ▲ Sin carga, sin lastre, (ni tren de transporte), flecha y altura máxima.

**I**

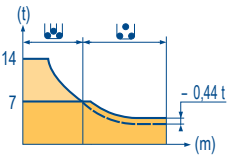
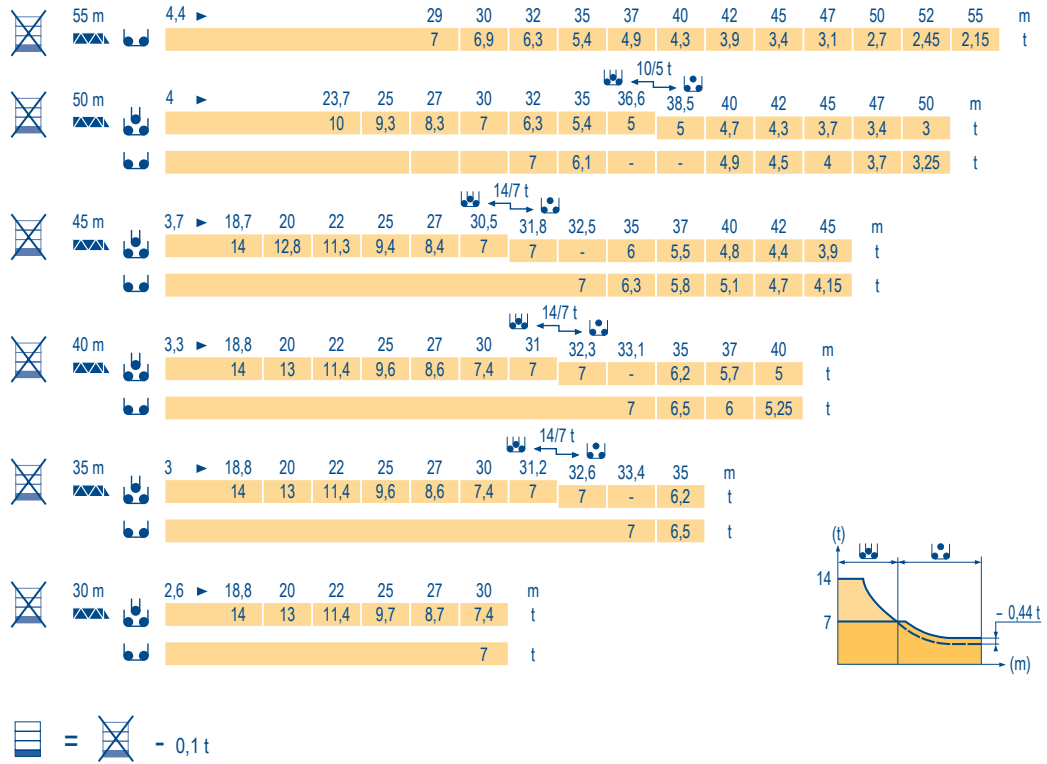
● Reazioni in servizio  
 ■ Reazioni fuori servizio  
 ▲ A vuoto, senza zavorra (ne assali di trasporto) con braccio massimo e altezza massima.

**P**

● Reacções em serviço  
 ■ Reacções fora de serviço  
 ▲ Sem carga (nem trem de transporte)- sem lastro com lança e altura máximas.

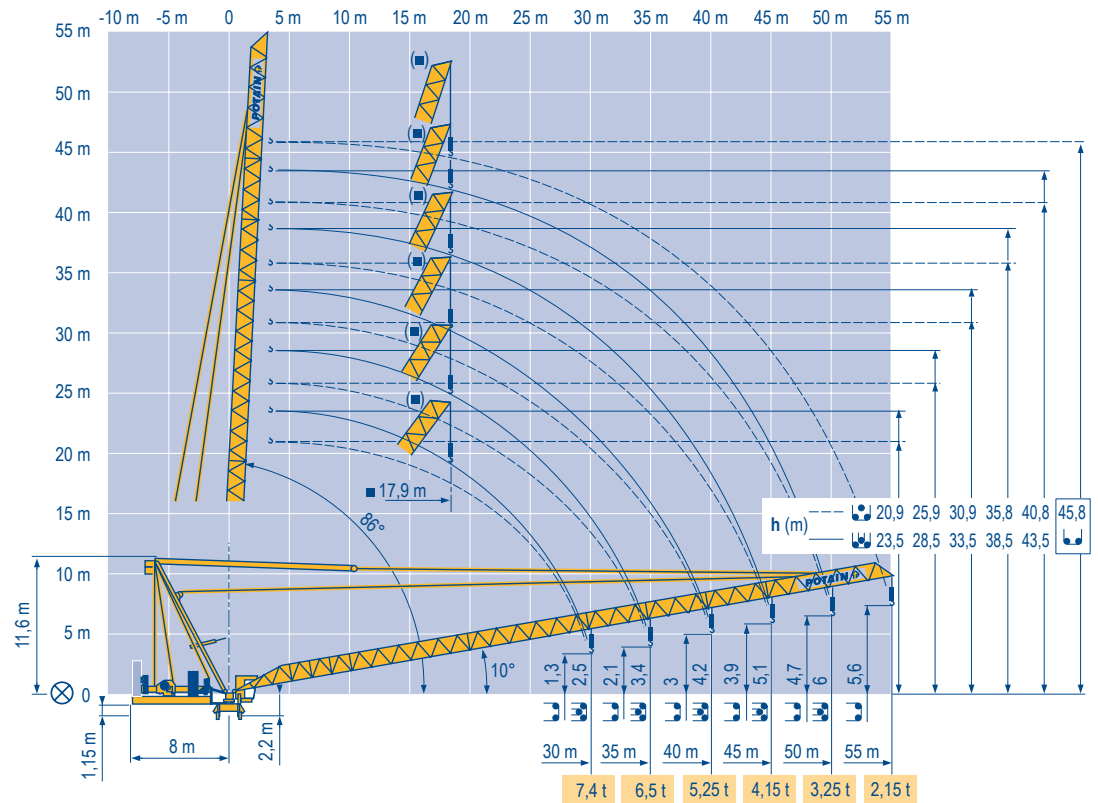
**Courbes de charges**  
**Lastkurven**  
**Load diagrams**  
**Curvas de cargas**  
**Curve di carico**  
**Curva de cargas**

MDP 1



**Flèche relevée**  
**Ausleger in Steilstellung**  
**Luffing jib**  
**Flecha izada**  
**Braccio impennato**  
**Lança inclinada**







MDP 1




**MR 225 A**



F	D	GB	E	I	P
Courbes de charges sans plateforme d'intervention	Lastkurven ohne Arbeitsbühne	Load diagrams without jib-end inspection platform	Curvas de cargas sin plataforma de servicio	Curve di carico senza piattaforma di servizio	Curva de cargas sem uma plataforma de intervenção
Courbes de charges avec plateforme d'intervention déduire 0,1 t	Lastkurven mit Arbeitsbühne 0,1 t abziehen	Load diagrams with jib-end inspection platform deduct 0,1 t	Curvas de cargas con plataforma de servicio deducir 0,1 t	Curve di carico con piattaforma di servizio dedurre 0,1 t	Curva de cargas com uma plataforma de intervenção deduzir 0,1 t
Axe articulation flèche	Ausleger-gelenkachse	Jib hinge shaft	Eje articulación de flecha	Asse cerniera braccio	Eixo de articulação da lança
Position girouette	Windfreistellung	Weathering position	Posición eleta	Libera rotazione	Posição em catavento

MR 225 A - 50 Hz													ch - PS hp	kW	
▲ ▼	75 LVF 35 Optima	m/min t	0 → 40 → 46 → 81 → 96	6	3	2,25	0 → 20 → 23 → 41 → 48	14	12	6	4,5	75	55	766 m	
	100 LVF 35 Optima	m/min t	0 → 52 → 62 → 108 → 140	6	3	1,75	0 → 26 → 31 → 54 → 70	14	12	6	3,5	100	75	1146 m	
▲ ▼	150 LCC 35	m/min t	0 → 84 → 100 → 124 → 166 → 200	5,25	3,5	1,75	0 → 42 → 50 → 62 → 83 → 100	14	10,5	7	3,5	150	110	1004 m	
	75 V VF 30	m/min	2 min									75	55		
	RVF 162 Optima +	rpm	0 → 0,7									2 x 7,5	2 x 5,5		
	V 60 A RT 544 A1 - 2V	m/min	13,5 - 27									4 x 7	4 x 5,2		
CEI 38 			IEC 38					kVA							
400 V (+6% -10%)								75 LVF : 165 kVA 100 LVF : 190 kVA 150 LCC : 240 kVA							
MR 225 A - 60 Hz													ch - PS hp	kW	
▲ ▼	75 LVF 35 Optima	m/min t	0 → 40 → 46 → 81 → 96	6	3	2,25	0 → 20 → 23 → 41 → 48	14	12	6	4,5	75	55	766 m	
	100 LVF 35 Optima	m/min t	0 → 52 → 62 → 108 → 140	6	3	1,75	0 → 26 → 31 → 54 → 70	14	12	6	3,5	100	75	1146 m	
▲ ▼	150 LCC 35	m/min t	0 → 84 → 100 → 124 → 166 → 200	5,25	3,5	1,75	0 → 42 → 50 → 62 → 83 → 100	14	10,5	7	3,5	150	110	1004 m	
	75 V VF 30	m/min	2 min									75	55		
	RVF 162 Optima +	rpm	0 → 0,7									2 x 7,5	2 x 5,5		
	V 60 A RT 544 A1 - 2V	m/min	16 - 32									4 x 8,4	4 x 6,2		
CEI 38 			IEC 38					kVA							
480 V (+6% -10%)								75 LVF : 165 kVA 100 LVF : 190 kVA 150 LCC : 270 kVA							

F	D	GB	E	I	P
					
Levage	Heben	Hoisting	Elevación	Sollevamento	Elevação
Relevage	Ausleger-Einziehen	Luffing	Elevación de flecha	Brandeggio	Inclinação da lança
Orientation	Schwenken	Slewing	Orientación	Rotazione	Rotação
Translation	Kranfahren	Travelling	Traslación	Traslazione	Translação
Nous consulter	Auf Anfrage	Consult us	Consultarnos	Consultateci	Consultar-nos

 Document commercial non contractuel. Pour toute information technique se référer à la notice correspondante. Unverbindliches Vertriebsdokument. Für technische Informationen, siehe die entsprechenden Anweisungen. This commercial document is not legally binding. For any technical information, please refer to the corresponding instructions. Documento comercial no contractuel. Para cualquier información técnica, ver la noticia correspondiente. Documento commerciale non vincolante, per tutte le informazioni tecniche fare riferimento al catalogo istruzioni. Documento comercial não contratual. Para qualquer informação técnica complementar consultar as respectivas instruções.



**Americas**  
Tel : +1 888 479 7278  
Tel : +1 717 593 2000

**Europe - Middle East - Africa**  
Tel : +33 (0) 4 72 81 50 00  
Tel : +44 (0) 191 522 2000

**Asia - Pacific**  
Tel : +65 6264 1188  
Fax : +65 6862 4040

www.manitowoccrane.com

18, rue de Charbonnières - B.R.173  
69132 ECULLY Cedex - France

Tél. : +33 (0) 4 72 18 20 20  
Fax. : +33 (0) 4 72 18 20 00  
www.manitowoccrane.com

**MR 225 A**

Code H-89985-50\_Réf. 2006 14 MDP 2

Copyright.Reproduction interdite © POTAIN 2006